



MENNENS.TECH

---

## Adaptive Devices

VERSION 2.0 | SEPT 2023

---

**All our devices are handcrafted and equipped with custom software. Both the hardware and software can be tailored to meet your specific requirements.**

# 1 – Mennens.Tech Mini Joystick

## Based on:

- Joycon joystick

## Works with:

- Xbox Adaptive Controller
- Windows
- MacOS
- *(Not tested yet, but will be compatible with the Hori Flex Controller in the future)*



## Connections:

- USB-C

## Functions:

- 2 Axis movement & 1 click

## Modes:

### 1. Mouse mode: (red led)

When plugging the device in the USB-C port, press the joystick down.

**Functions:** *Movement of the mouse*

*The click changes the sensitivity of the mouse*

### 2. Joystick mode: (blue led)

When plugging the device in the USB-C port, don't press any buttons.

**Functions:** *(Left)Joystick movement and the joystick Press (Left Stick Button)*

## 2 – Mennens.Tech Nunchuck Adapter

### Based on:

- Wii Nunchuck

### Works with:

- Xbox Adaptive Controller
- Windows
- MacOS
- *(Not tested yet, but will be compatible with the Hori Flex Controller in the future)*



### Connections:

- USB-A (male)
- Wii Nunchuck (female)

### Functions:

- 2 Axis movement & 2 buttons
- 1 button on the adapter itself

### Modes:

1.

2. Mouse mode: (red led)

When plugging the device in, press the button on the adapter.

**Functions:** - *Movement of the mouse*

- *The click (on the adapter) changes the sensitivity of the mouse*

- *C Button: Right click*

- *Z Button: Left click*

- *C & Z at the same time: Scrolling function (LED turns Green)*

3. Joystick mode: (blue led)

When plugging the device in, don't press any buttons.

**Functions:** - *(Left) Joystick movement*

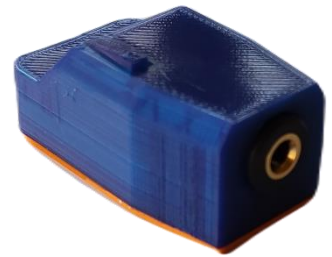
- *C Button: Left stick Button*

- *Z Button: A*

### 3 – Mennens.Tech Jack Adapter

#### Based on:

3,5mm Jack Analogue joysticks



#### Works with:

- Xbox Adaptive Controller
- Windows
- MacOS
- *(Not tested yet, but will be compatible with the Hori Flex Controller in the future)*



#### Connections:

- USB-A (male)
- 3,5mm jack (trrs - female)

#### Functions:

- 2 Axis movement
- 1 button on the adapter itself

#### Modes:

1. Mouse mode: (red led)

When plugging the device in, press the button on the adapter.

**Functions:** - *Movement of the mouse*  
- *The click (on the adapter) changes the sensitivity of the mouse*

2. Joystick mode: (blue led)

When plugging the device in, don't press any buttons.

**Functions:** *(Left)Joystick movement*

## 4 – Mennens.Tech Big Joystick

### Based on:

Normal joysticks with extra handles

### Works with:

- Xbox Adaptive Controller
- Windows
- MacOS
- *(Not tested yet, but will be compatible with the Hori Flex Controller in the future)*

### Connections:

- USB-C

### Functions:

- 2 Axis movement
- 1 touch button on the adapter itself (near the LED on the USB side of the joystick)

### Modes:

1. Mouse mode: (red led)

When plugging the device in, press the button on the adapter.

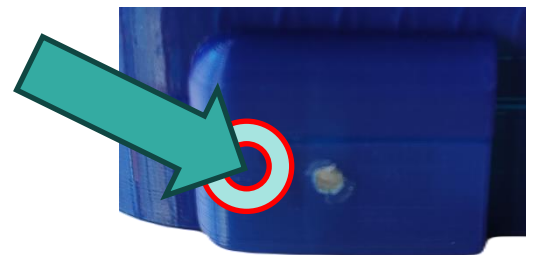
**Functions:** - Movement of the mouse

- The click (on the adapter) changes the sensitivity of the mouse

2. Joystick mode: (blue led)

When plugging the device in, don't press any buttons.

**Functions:** (Left) Joystick movement



## 5 – Mennens.Tech One handed Joystick

### Based on:

One handed joystick with extra buttons

### Works with:

- Xbox Adaptive Controller
- Windows (the Twist movement only works with the Xbox Adaptive controller)
- MacOS (the Twist movement only works with the Xbox Adaptive controller)
- *(Not tested yet, but will be compatible with the Hori Flex Controller in the future)*

### Connections:

- USB-C
- 3,5mm Jack (for the twist movement of the joystick)

### Functions:

- 4 Axis movement
- 2 Touch buttons on the top of the joystick housing
- 1 Click button on the top of the joystick

### Modes:

#### 1. Mouse mode: (Green led)

When plugging the device in, press the button on the adapter.

- Functions:**
- *Movement of the mouse*
  - *The click (on the joystick) changes the sensitivity of the mouse*
  - *Left touch button is left click*
  - *Right touch button is right click*

#### 2. Joystick mode: (blue led)

When plugging the device in, don't press any buttons.

- Functions:**
- *(Left) Joystick movement*
  - *(Right) joystick movement with the twist of the joystick, if you toggle the switch in the front, you toggle the axis (x/y)*
  - *Joystick button is button A*
  - *Right touch button is Joystick Press*
  - *Left touch button is LB*

